



ROOF FABRICATORS (PVT) LTD.

Standard Steel Building System

www.roof.lk

We Attempt to Provide Impeccable Quality and Service that is Beyond our Customer as a Company

About Us

Established in ROOF FABRICATORS (PVT) LTD. Name Even us GAMINI IRON WORKS Since 2007 are Special in Roof Fabrication of Steel Building, Bridge (for Turisam), Multi type Roof, Deck, Roof for Filling Station, Ware Houses, Rain Water Solution Gutter, Ridgab cup down Pipe and Etc...

Key Project for Trusties & Roofing System

Decking & Clading work at Maspotha



Mono Type Roof at Kurunegala



Machinery Speirparts Wairhouse at Wahara, at Kurunegala.



Bridged for Tourist Hotel at Kosgoda



Steel Building with Deck at Kurunegala



Cooperative Filling Station at Somawathiya



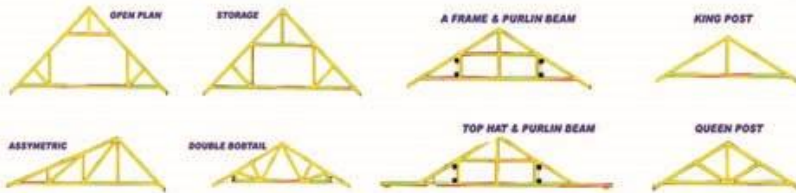
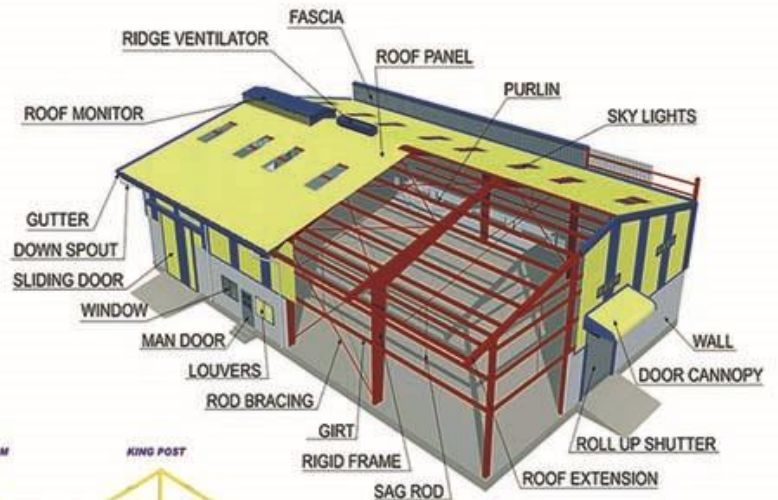
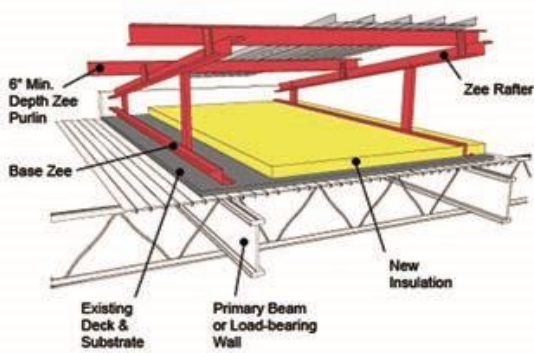
Wrought iron

Wrought iron is an iron alloy with a very low carbon (less than 0.08%) content in contrast to cast iron (2.1% to 4%), and has fibrous inclusions known as slag up to 2% by weight. It is a semi-fused mass of iron with slag inclusions which gives it a "grain" resembling wood, that is visible when it is etched or bent to the point of failure. Wrought iron is tough, malleable, ductile, corrosion-resistant and easily welded. Before the development of effective methods of steelmaking and the availability of large quantities of steel, wrought iron was the most common form of malleable iron. A modest amount of wrought iron was used as a raw material for refining into steel, w

hich was used mainly to produce swords, cutlery, chisels, axes and other edged tools as well as springs and files. The demand for wrought iron reached its peak in the 1860s with the adaptation of ironclad warships and railways, but then declined as mild steel quality problems such as brittleness were solved and it became inexpensive and widely available

Many items, before they came to be made of mild steel, were produced from wrought iron, including rivets, nails, wire, chains, rails, railway couplings, water and steam pipes, nuts, bolts, horse-shoes, handrails, wagon tires, straps for timber roof trusses, and ornamental ironwork.





ROOF FABRICATORS (PVT) LTD.

Standard Steel Building System

Office & Factory

Sundarapola Road,
 Yanthampalawa,
 Kurunegala.
 Tel. 037 20 52 575, 077 57 80 210,
 077 66 93 376
 E-mail : roofcld@gmail.com
 Web : www.roof.lk